

Detachable clearer lips
Draw frame RSB and SB series

RIETER

Detachable Clearer Lips

Symmetric design and increased lifetime



Your benefits:

- Consistently high sliver and yarn quality
- Easy to install and maintain
- Sustainable solution
- Extended lifetime due to high quality material

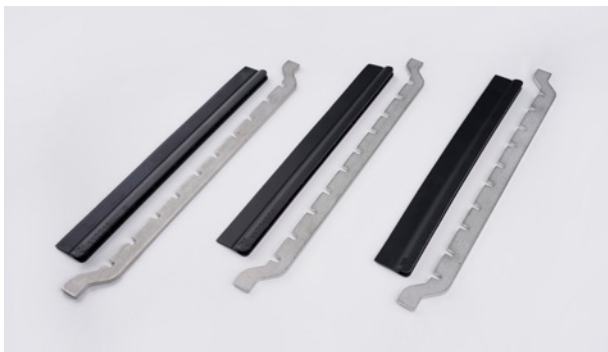


Detachable Clearer Lips for Extended Lifetime

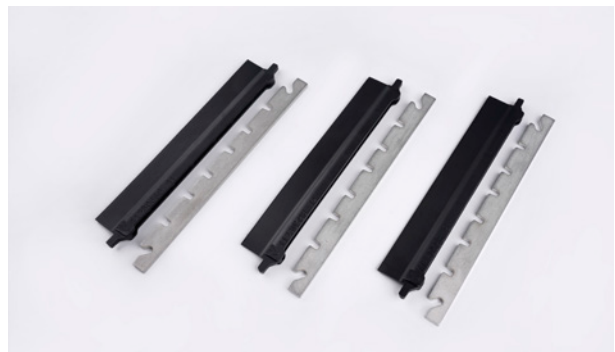
Achieving consistent quality and ease of installation

The top and bottom clearer lips in the draw frame drafting zone are critical to ensure consistent quality and uninterrupted machine operation. The clearer lips support the effective removal of micro dust and short fibers that are stuck to the top and bottom rollers and pass them on through the suction system to avoid lapping on the rollers.

In order to fulfill their function and deliver the benefits, the condition and quality of the clearer lips have to be checked during machine maintenance. If damaged or broken, the lips need to be exchanged. Ease of use, installation and long lifetime of the components are the key factors to be considered in the selection of the right product. In operation, scheduled replacements of the clearer lips are important to make sure the machine is running uninterrupted.



Bottom clearer lip with detachable holder



Top clearer lip with detachable holder

Overview of the detachable clearer lips

The product consists of a new detachable metal holder and a clearer lip. While the holder can be reused and is a one-time purchase, the lips are designed to be exchanged separately and mounted onto the existing holder. The design provides a quick clip-on sustainable solution with ease of installation. No tools or screws are needed to fix the clearer lips on the holder. The superior symmetric design prevents incorrect insertion.

The new clearer lips are made of improved synthetic material to withstand higher working temperatures and extend their lifetime. The detachable clearer lips will have perfect alignment with the rollers and keep the removal efficiency of micro dust and short fibers consistently high throughout their entire lifetime. This leads to better cleaning with fewer lapping and ensures consistent sliver and yarn quality.

Availability and installation

The detachable clearer clips with holders are suitable for the below models of Rieter draw frame machines and can be easily installed by the customer.

RSB Series	RSB-D 30	RSB-D 35	RSB-D 40	RSB-D 45	RSB-D 50	RSB-D 22	RSB-D24	RSB-D 26
SB Series	SB-D 10	SB-D 15	SB-D 40	SB-D 45	SB-D 50	SB-D 22		SB-D 26
Detachable clearer lip bottom	X	X	X	X	X	X	X	X
Detachable clearer lip top	X*	X*	X	X	X	X	X	X

* Only if TOPclean upgrade is installed

Rieter Machine Works Ltd.
Klosterstrasse 20
CH-8406 Winterthur
T +41 52 208 7171
F +41 52 208 7283
aftersales@rieter.com

Rieter India Private Ltd.
Gat No. 768/2, Village Wing
Shindewadi-Bhor Road
Taluka Khandala, District Satara
IN-Maharashtra 412 801
T +91 2169 664 141
F +91 2169 664 226

**Rieter (China) Textile
Instruments Co., Ltd.**
390 West Hehai Road
Changzhou 213022, Jiangsu
P.R. China
T +86 519 8511 0675
F +86 519 8511 0673

The data and illustrations in this brochure and on the corresponding data carrier refer to the date of printing. Rieter reserves the right to make any necessary changes at any time and without special notice. Rieter systems and Rieter innovations are protected by patents.

3604-v1 en 2305