

# ESSENTIAL

Rieter Digital Spinning Suite

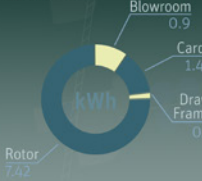
## Production Efficiency

Current shift



## Energy Consumption

Current shift



## Yarn Faults

Current shift



## Task List

- Draw Frame 2  
Grinding of the Top Roller Cots (Buffing)
- Card 5  
Sharpening of Flat Machine C 70
- Draw Frame 6  
Checking of Compressed-Air Filter

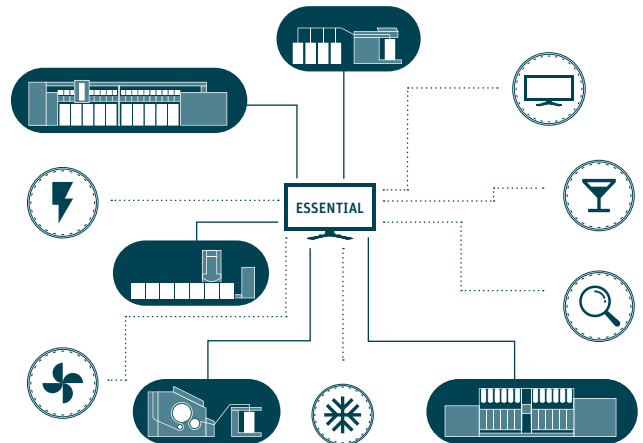
The all-in-one mill  
management system

# ESSENTIAL – Rieter Digital Spinning Suite

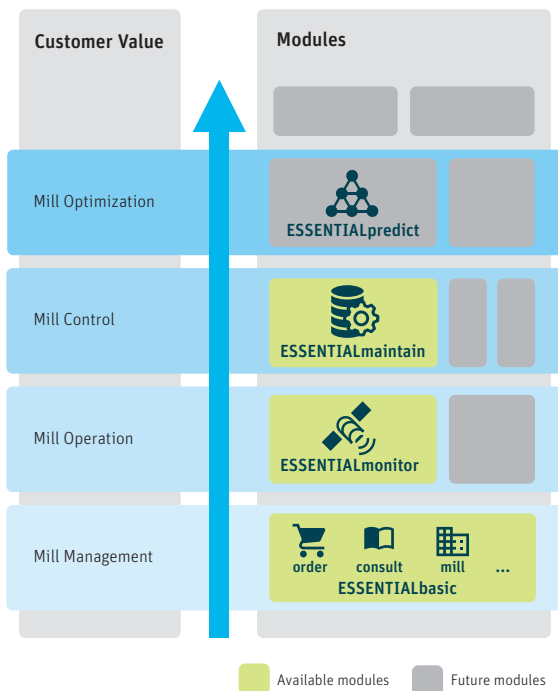
## The all-in-one mill management system

ESSENTIAL brings digitization into the spinning mill. The Rieter Digital Spinning Suite monitors and analyzes data over the complete spinning process, shows potential areas for improvement, identifies abnormalities and their root causes. ESSENTIAL combines digital technology with Rieter's in-depth knowledge of all four spinning processes. This strengthens the expertise of mill staff, brings transparency on improvement opportunities, and optimizes resource allocation, machine and process settings.

A holistic view from bale to yarn is key to optimize the entire spinning process and eliminate inefficiencies.



ESSENTIAL connects the entire spinning mill



Modular set up of ESSENTIAL

## Modules for all requirements

ESSENTIAL is a modular system. The spinning mill can be gradually digitized. ESSENTIALbasic, the starter package of the Rieter Digital Spinning Suite, is available free of charge for all Rieter customers. It comprises modules such as ESSENTIALorder, ESSENTIALconsult, and other business services. According to their needs, customers can select additional modules in the Rieter Digital Spinning Suite and add the modules individually.

# Fast Parts Ordering and Search of Information

## ESSENTIALbasic

### Services for every day's mill management

ESSENTIALbasic offers useful modules and information that simplify the everyday life in a spinning mill such as:

#### Mill configuration

Depicts all machines that are installed in the spinning mill. Mill managers can also add non-Rieter machines and auxiliary equipment to have a complete overview.

#### Market information

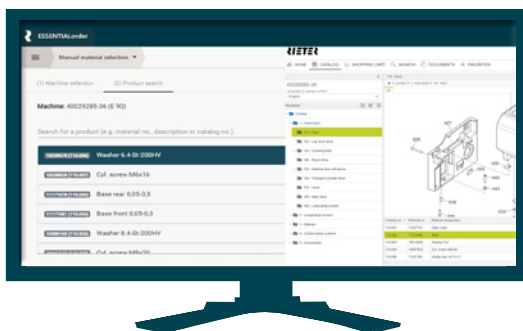
Useful market information is integrated into ESSENTIALbasic. The information level is constantly expanded.

### Ordering and management

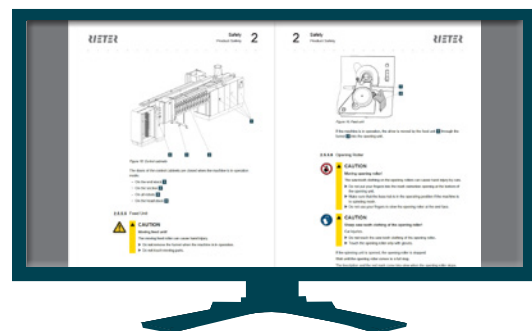
ESSENTIALorder facilitates the handling of both urgent orders and standard orders, allowing spinning mills to optimize the amount of stock they hold internally. The module contains an online state-of-the-art spare parts catalog for the specific machine configuration. Rieter's inventory comprises over 14.5 million parts – the availability, price, and supplier of which can all be checked before ordering. Once an order has been placed, the parts are quickly shipped to their final destination from Rieter's central and local warehouses. The system is available 24 hours a day, enabling the customer to submit orders from anywhere and at any time.

### Find information fast

ESSENTIALconsult provides a quick access to important information. The digital manual contains all operation manuals, eliminating the need to spend time searching through paper documents. Further documents can be added by the customer and linked to a specific machine.



State-of-the-art webshop



Digital documentation

# Comprehensive Key Performance Indicators

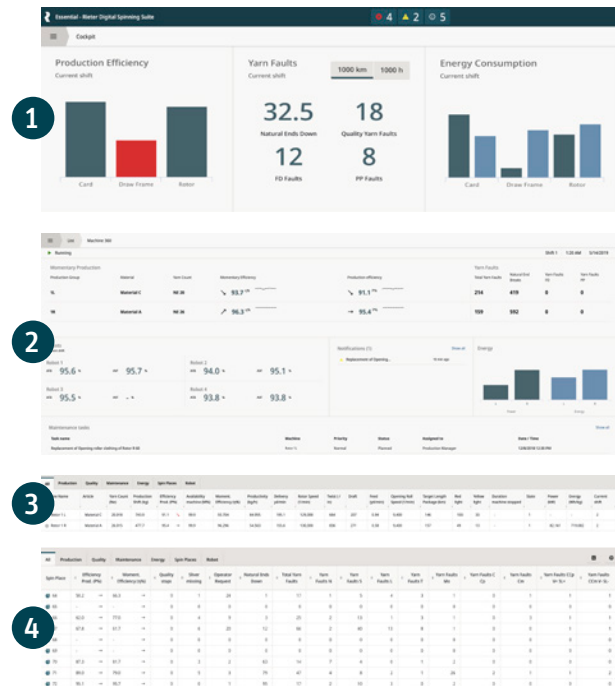
## ESSENTIALmonitor

### Introduce the right measures



ESSENTIALmonitor provides clearly organized data from the entire spinning process centrally. This allows all relevant information to be collected, weaknesses to be identified, and personnel to be utilized in the most economical way. The specific and non-stop recording of data for production, energy, and quality allows fast response times for introducing the right measures. This increases the efficiency of spinning mills while reducing costs. The data is displayed in a user-friendly cockpit that shows the individual data for each machine in the form of a drill-down feature, for a quick and easy access.

- 1 Find the most relevant data on plant level.
- 2 Drill down to compare performance data between machines of the same process stage – for example rotor – and have a 360° view on each machine.
- 3 Get performance, quality, planned maintenance and energy data per lot.
- 4 See detailed data per spinning position, such as yarn breaks and quality data at a specific rotor number.

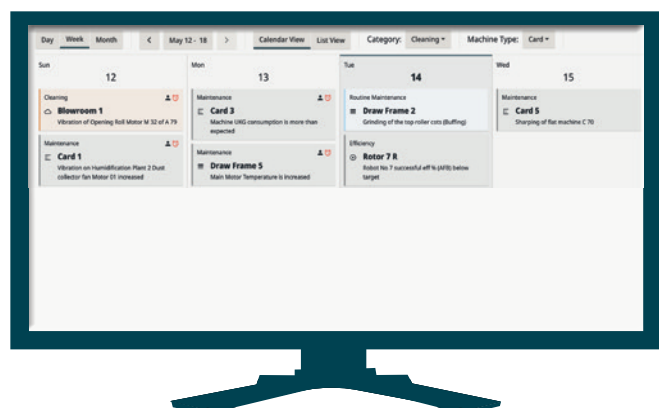


User-friendly display of key information

### Manage your past, present, and future actions

Thanks to a comprehensive ticketing system and clear user instructions, actions can be organized, scheduled, assigned, and tracked with full transparency. ESSENTIALmonitor provides a complete and transparent overview of all past, present, and future maintenance and quality work.

The planned maintenance and quality planning section shows all required planned maintenance tasks such as cleaning, lubrication, and replacement. A calendar view provides an overview of all daily tasks, including offline quality test planning.



Day-by-day planner

# Information Tailored to All Needs

## ESSENTIALmonitor

### Monitoring – anytime, anywhere

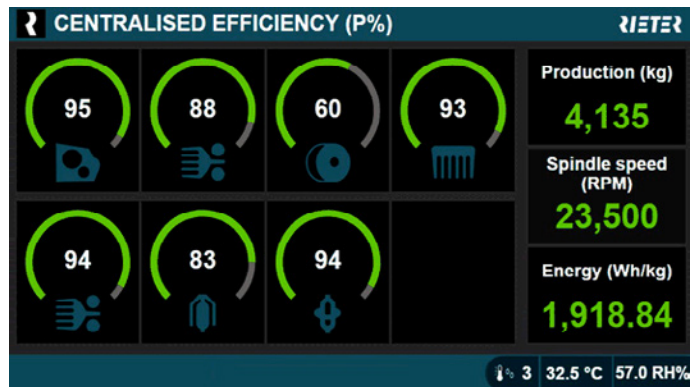
The mobile application for smartphones of ESSENTIALmonitor provides key data concerning production, quality, and energy in near real time. The app enables customers to respond to challenges without delay and minimizes expensive downtime.



Smartphone app of ESSENTIALmonitor

### For a transparent spinning mill

ESSENTIALdashboard as an option of ESSENTIALmonitor visualizes current key performance indicators (KPIs) such as efficiency, production, and key quality data. A large display unit makes the information available directly in the mill. ESSENTIALdashboard offers even more transparency on the current performance of the spinning mill and provides staff with relevant information.



Large display unit with KPIs

### User-centric approach

There are various functions working in a spinning mill that require different data. Therefore, ESSENTIAL displays the most important data in a role-based cockpit. Data tiles can be selected and re-arranged to meet individual requirements. The customer-oriented Rieter Digital Spinning Suite not only improves decision-making at the top level, but also supports daily business decisions that employees face every day in spinning mills. Depending on the hierarchy level and information needed, different channels are useful. The mobile app is ideal for the decision makers to get a 24/7 overview of the performance of their spinning mills. The mill managers have all data in a user-friendly cockpit on their desktop and can drill down to every detail. They can also generate reports on various levels such as a plant overview or a report on machine stops. Operators and supervisors see the performance of their machines on ESSENTIALdashboard while working.

# Consistently High Production Output

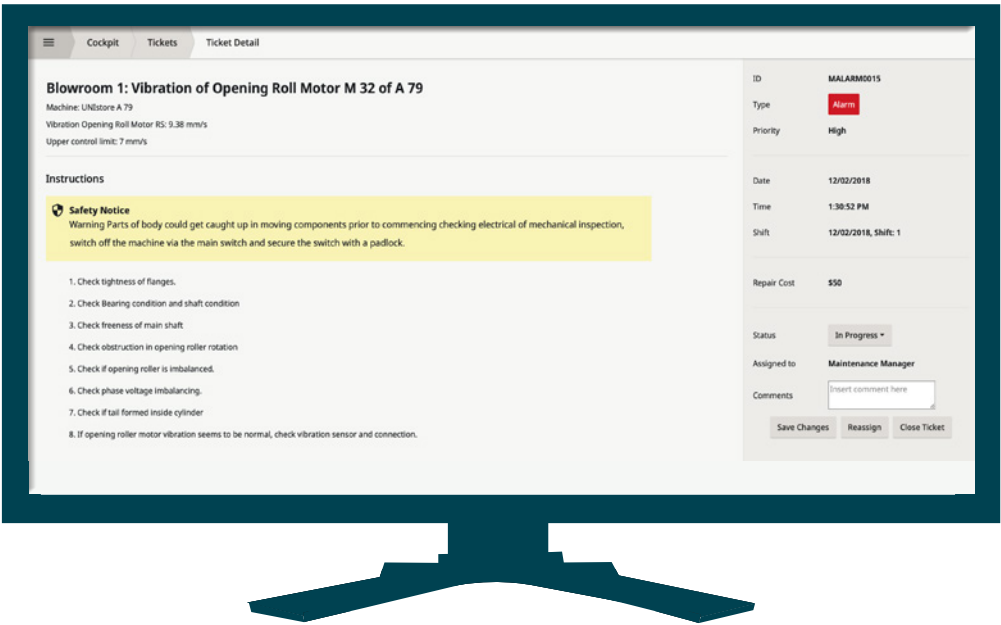
ESSENTIALmaintain improvement suggestions

## Condition monitoring with alarm instructions



ESSENTIALmaintain enables intelligent spinning mill maintenance by analyzing sensor data from critical machine components and identifying abnormalities to avoid outages. Detailed alarm notifications with clear measures ensure that the user keeps the equipment at highest availability. Alarms are triggered as soon as a preset threshold is crossed. The alarm section provides a detailed status of all alarm notifications with clear measures and assignments. Thanks to a smart

ticketing system, past and current alarms are available, and it is easy to track their status. A particular person can be assigned to each ticket. If a ticket is not closed on time, it can be escalated to a higher hierarchy level. This improves machine productivity and lengthens the service life while reducing the overall costs of inspection and maintenance.



Smart alarm notifications with clear instructions



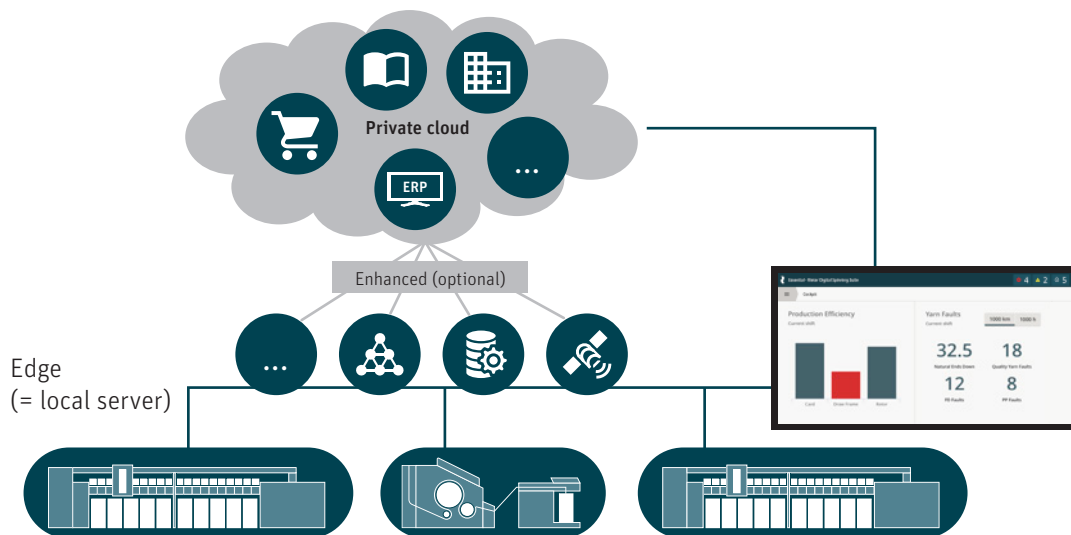
# Keep Your Data Safe

## Key data in local servers

### Control key data

ESSENTIAL uses edge computing to gather and process all data locally in the spinning mill. The system analyzes this data immediately, which helps the spinning mill's management to make decisions. ESSENTIALmonitor, ESSENTIALmaintain are available with edge computing due to critical production-related data processing such as machine performance or yarn quality. This means data is stored on a local server in the spinning mill. ESSENTIALmonitor receives the data from the Programmable

Logic Controllers (PLCs) of all Rieter machines. Rieter end spinning machines have integrated sensors that check the running properties of each individual spinning position. For ring and compact spinning, this is available through the integrated Individual Spindle Monitoring (ISM) system premium and for rotor and air-jet spinning by the digital yarn clearers. For ESSENTIALmaintain, master and sensor concentrators are installed on the equipment.



Production-related data is stored locally

### Enhance functionalities

To enhance user experience and customer value and draw on the more than 220 years of process know-how of Rieter, a private cloud is key to provide further analysis, visualization and process recommendations.

ESSENTIALbasic, including the modules ESSENTIALorder and ESSENTIALconsult, and other features with non-production critical data are therefore stored on a private cloud. To ensure that cloud data is secure, Rieter works together with reliable partners, focusing on security and compliance with legal requirements.

**Rieter Machine Works Ltd.**

Klosterstrasse 20  
CH-8406 Winterthur  
T +41 52 208 7171  
F +41 52 208 8320  
machines@rieter.com  
aftersales@rieter.com

**Rieter India Private Ltd.**

Gat No. 768/2, Village Wing  
Shindewadi-Bhor Road  
Taluka Khandala, District Satara  
IN-Maharashtra 412 801  
T +91 2169 664 141  
F +91 2169 664 226

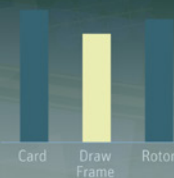
**Rieter (China) Textile  
Instruments Co., Ltd.**

390 West Hehai Road  
Changzhou 213022, Jiangsu  
P.R. China  
T +86 519 8511 0675  
F +86 519 8511 0673

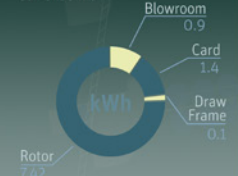
[www.rieter.com](http://www.rieter.com)

**Production Efficiency**

Current shift

**Energy Consumption**

Current shift

**Yarn Faults**

Current shift

**Task List**

- Draw Frame 2  
Grinding of the Top Roller Cots (Buffing)
- Card 5  
Sharpening of Flat Machine C 70
- Draw Frame 6  
Checking of Compressed-Air Filter

The data and illustrations in this brochure and on the corresponding data carrier refer to the date of printing. Rieter reserves the right to make any necessary changes at any time and without special notice. Rieter systems and Rieter innovations are protected by patents.

3315-v3 en 2210